



# User Guide

## **SUMMARY**

This guide provides technical specifications and information about monitor features, setting up the monitor, and using the monitor.

## Legal information

© Copyright 2024 HP Development Company, L.P.

Adobe RGB is a trademark of Adobe Systems Incorporated. AMD and FreeSync are trademarks of Advanced Micro Devices, Inc. Microsoft and Windows are either registered trademarks or trademarks of Microsoft Corporation in the United States and/or other countries. NVIDIA and G-SYNC are trademarks and/or registered trademarks of NVIDIA Corporation in the U.S. and other countries. PANTONE is a trademark or registered trademark of Pantone LLC in the United States and/or other countries. USB Type-C and USB-C are registered trademarks of USB Implementers Forum. VESA, DisplayPort™ and the DisplayPort™ logo are trademarks owned by the Video Electronics Standards Association (VESA) in the United States and other countries.

The information contained herein is subject to change without notice. The only warranties for HP products and services are set forth in the express warranty statements accompanying such products and services. Nothing herein should be construed as constituting an additional warranty. HP shall not be liable for technical or editorial errors or omissions contained herein.

### Product notice

This guide describes features that are common to most models. Some features may not be available on your product. To access the latest user guide, go to <http://www.hp.com/support>, and follow the instructions to find your product. Then select **Setup & User Guides**.

To help us improve this document, please send any suggestions, comments, or errors to <mailto:hp.doc.feedback@hp.com>. Include the document part number when submitting your feedback.

First Edition: August 2024

Document Part Number: P05221-001

---

# Table of contents






<b>1 About this guide</b>	<b>1</b>
<b>2 Getting started</b>	<b>2</b>
Important safety information	2
More HP resources	3
Preparing to call technical support	3
Getting to know your monitor	3
Features	3
Rear components	5
Locating the serial number and product number	7
Setting up the monitor	7
Attaching the monitor stand	7
Mounting the monitor head	8
Removing the monitor stand	8
Attaching the monitor head to a mounting device	9
Connecting the cables	10
Adjusting the monitor	12
Turning on the monitor	14
HP watermark and image retention policy	15
Connecting an HP notebook or desktop	15
Installing the headphone hook	16
<b>3 Using the monitor</b>	<b>17</b>
Downloading HP Display Center to access HP User Color Recalibration	17
Downloading software and utilities	17
Downloading OMEN Gaming Hub and accessing OMEN Light Studio	17
The Information (INF) file	18
The Image Color Matching (ICM) file	18
Enabling G-SYNC compatibility	18
Using the OSD menu	18
Quick Settings menus	19
Main menus	20
OMEN Gear Switch	21
Connect the cables	21
Using OMEN Gear Switch	22
Changing the Power Mode setting	22
Using Auto-Sleep Mode	23
Using PiP and PbP	23

Using external lighting .....	23
<b>4 Support and troubleshooting.....</b>	<b>25</b>
Using the self-test function .....	25
Solving common issues .....	26
Button lockouts .....	28
<b>5 Maintaining the monitor .....</b>	<b>29</b>
Maintenance guidelines.....	29
Cleaning the monitor .....	29
Shipping the monitor .....	30
<b>Appendix A Technical specifications .....</b>	<b>31</b>
80 cm (31.5 in) model specifications.....	31
Preset display resolutions.....	32
80 cm (31.5 in) model.....	32
Power supply specification .....	33
Energy saver feature.....	33
<b>Appendix B Accessibility .....</b>	<b>34</b>
HP and accessibility.....	34
Finding the technology tools you need.....	34
The HP commitment.....	34
International Association of Accessibility Professionals (IAAP).....	35
Finding the best assistive technology.....	35
Assessing your needs .....	35
Accessibility for HP products.....	35
Monitor accessibility features (select products/regions only).....	36
Built-in accessibility features.....	36
Text to Speech (select products/regions only).....	36
What is Accessibility Mode?.....	36
Standards and legislation .....	37
Standards.....	37
Mandate 376 - EN 301 549 .....	37
Web Content Accessibility Guidelines (WCAG).....	37
Legislation and regulations.....	37
Useful accessibility resources and links .....	38
Organizations.....	38
Educational institutions .....	38
Other disability resources .....	39
HP links .....	39
Contacting support .....	39
<b>Index.....</b>	<b>40</b>

---

# 1 About this guide

This guide provides technical specifications and information about monitor features, setting up the monitor, and using the software. Depending on the model, your monitor may not have all the features included in this guide.

- 
-  **WARNING!** Indicates a hazardous situation that, if not avoided, **could** result in serious injury or death.
  -  **CAUTION:** Indicates a hazardous situation that, if not avoided, **could** result in minor or moderate injury.
  -  **IMPORTANT:** Indicates information considered important but not hazard-related (for example, messages related to property damage). Warns the user that failure to follow a procedure exactly as described could result in loss of data or in damage to hardware or software. Also contains essential information to explain a concept or to complete a task.
  -  **NOTE:** Contains additional information to emphasize or supplement important points of the main text.
  -  **TIP:** Provides helpful hints for completing a task.
- 



This product incorporates HDMI® technology.

---

## 2 Getting started


Read this chapter to learn about safety information, where to find additional HP resources, where to find the components of the monitor, and how to set up the monitor.

### Important safety information

An AC adapter and power cord might be included with the monitor. If you use another cord, use only a power source and connection appropriate for this monitor.

For information about the correct power cord set to use with the monitor, see the *Product Notices* at [HP Regulatory, Safety, Compliance, and Warranty Information](#).

---

 **WARNING!** To reduce the risk of electric shock or damage to the equipment:


- Plug the power cord into an AC outlet that is easily accessible at all times.
- If the power cord has a three-pin attachment plug, plug the cord into a grounded (earthed) three-pin outlet.
- Disconnect power from the monitor by unplugging the power cord from the AC outlet. When unplugging the power cord from the AC outlet, grasp the cord by the plug.

---

For your safety, do not place anything on power cords or cables. Take care to route all cords and cables connected to the monitor so that they cannot be stepped on, pulled, grabbed, or tripped over.

To reduce the risk of serious injury, read the *Safety & Comfort Guide* provided with your user guides. It describes proper workstation setup and proper posture, health, and work habits for computer users. The *Safety & Comfort Guide* also provides important electrical and mechanical safety information. The *Safety & Comfort Guide* is also available on the web at <http://www.hp.com/ergo>.


---


 **IMPORTANT:** For the protection of the monitor and the computer, connect all power cords for the computer and its peripheral devices (such as a monitor, printer, scanner) to a surge protection device such as a power strip or uninterruptible power supply (UPS). Not all power strips provide surge protection; the power strip must be specifically labeled as having this capability. Use a power strip whose manufacturer offers a damage replacement policy so that you can replace the equipment if surge protection fails.

---


Use the appropriate and correctly sized furniture designed to properly support your monitor.

---

 **WARNING!** Monitors that are inappropriately situated on dressers, bookcases, shelves, desks, speakers, chests, or carts could fall over and cause personal injury.

 **WARNING! Stability hazard:** The device might fall, causing serious personal injury or death. To prevent injury, securely attach the monitor to the floor or wall in accordance with the installation instructions.

 **WARNING!** This equipment is not suitable for use in locations where children are likely to be present.

 **NOTE:** This product is suitable for entertainment purposes. Consider placing the monitor in a controlled luminous environment to avoid interference from surrounding light and bright surfaces that might cause disturbing reflections from the screen.

---

## More HP resources

Use this table to locate resources that provide product details, how-to information, and more.

**Table 2-1** Additional information

Resource	Contents
Setup Instructions	Overview of monitor setup and features
HP support	For HP support or to resolve a hardware or software problem, perform one of these tasks: <ul style="list-style-type: none"><li>• Go to <a href="http://www.hp.com/support">http://www.hp.com/support</a>, and follow the instructions to find your product.</li><li>• Select the <b>Search</b> icon in the taskbar, type <code>support</code> in the search box, and then select <b>HP Support Assistant</b>.</li><li>• Select the question mark icon in the taskbar.</li></ul>



**NOTE:** Contact customer support to replace the power cord, the AC adapter (select products only), or any other cables that shipped with your monitor.

## Preparing to call technical support

Use this information if you have to troubleshoot an issue.

If you cannot solve a problem using [Support and troubleshooting on page 25](#), a call to technical support can provide additional help. Have the following information available when you call.

- Monitor model number
- Monitor serial number
- Purchase date on invoice
- Conditions under which the problem occurred
- Error messages received
- Hardware configuration
- Name and version of the hardware and firmware that you are using

## Getting to know your monitor

Your monitor has top-rated features. This section provides details about your components, where they are located, and how they work.

### Features

Depending on the model, your monitor might include the following features:

## Display features

- 80 cm (31.5 in) diagonal viewable screen area with 3840 × 2160 resolution, plus full-screen support for lower resolutions; includes custom scaling for maximum image size while preserving original aspect ratio
- Quantum dot organic light-emitting diode (QD-OLED)
- Wide color gamut to provide coverage of sRGB, BT.709, Adobe® RGB, and Display P3 color spaces
- Antireflective treatment
- Wide viewing angle to allow viewing from a sitting or standing position, or moving from side to side
- Tilt- and height-adjustment capabilities
- Pivot capability to rotate the monitor head from landscape to portrait orientation
- Picture in Picture (PiP) and Picture by Picture (PbP) functions to enable the USB Type-C®, DisplayPort™, and HDMI inputs to be viewed with one image overlaid onto another (PiP) or with one image positioned adjacent to another (PbP)
- Five-way on-screen display (OSD) joystick with center button and four directional buttons
- On-screen display (OSD) adjustments in several languages for easy setup and screen optimization
- Color space presets for sRGB, BT.709, Adobe RGB, and Display P3 color gamuts
- PANTONE® validated
- Keyboard Video Mouse (KVM) button for selecting the source device for the monitor
- User recalibration is available using HP Display Center software, which enables you to recalibrate presets on the monitor



---

**NOTE:** Go to [www.hp.com/support](http://www.hp.com/support) for more information about HP Display Center.

---

- Energy saver feature to meet requirements for reduced power consumption
- Cable management feature for placement of cables and cords

## Connectors

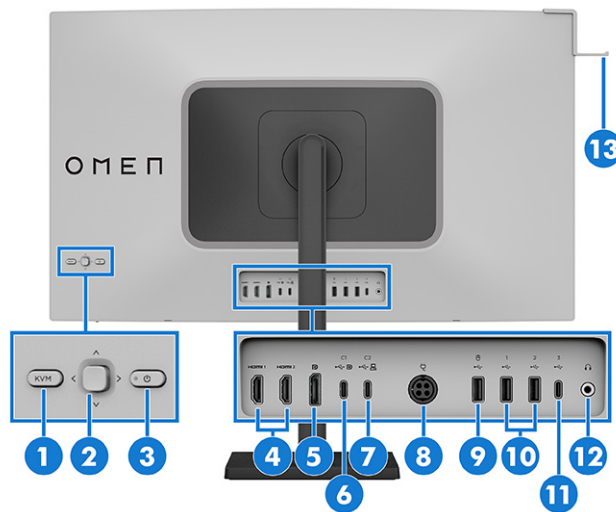
- DisplayPort video input (cable included)
- High-Definition Multimedia Interface (HDMI) video input (cable included)
- Audio-out (headphone) jack
- USB Type-C port
- USB hub with one USB Type-C port that connects to the computer (upstream) and four USB ports that connect to USB devices (downstream)
- USB Type-C-to-USB Type-A cable, DisplayPort cable, USB Type-C-to-USB Type-C cable, and HDMI cable provided

## Monitor stand

- Removable stand for flexible monitor-head-mounting solutions
- HP Quick Release 2 device to quickly attach the monitor head to the stand with a simple click and remove it with the convenient sliding tab release
- VESA® mounting bracket for attaching the monitor head to a wall-mount device or swing arm
- VESA mounting capability (100 mm × 100 mm) for attaching the monitor to a swing arm mount
- Support for a mounting bracket to attach the monitor to a mini desktop or mini workstation

## Rear components

To identify the components on the rear of the monitor, use this illustration and table.



**Table 2-2** Rear components and their descriptions

Component	Component Description	Description
(1)	KVM (keyboard video mouse) switch	Selects one of two computers or source devices to display on the monitor.
(2)	Joystick	Press to open the OSD settings.
(3)	Power button	Turns the monitor on or off.
(4)	HDMI 1 & 2 ports (2.1)	Each port connects the HDMI cable to a source device such as a computer or gaming console.
(5)	DisplayPort	Connects a DisplayPort cable to a source device such as a computer or game console.

**Table 2-2 Rear components and their descriptions (continued)**

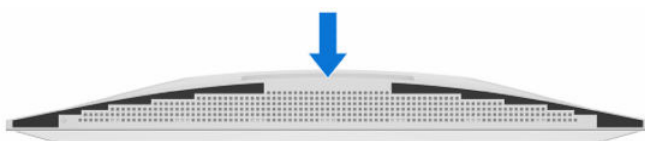
Component	Component Description	Description
(6)	USB Type-C port with DisplayPort Alt-Mode (upstream)	<p>Connects a USB Type-C cable to a source device such as a computer or game console. This USB Type-C port supports DisplayPort Alt-Mode for video input or as a USB 3.2 connection. This port can also be used to deliver up to 140 W of power to a device. Power outputs are 28 V/5 A, 20 V/5 A, 15 V/5 A, 12 V/5 A, 9 V/3 A, or 5V/3 A to achieve a 140 W output.</p> <p><b>NOTE:</b> This port also enables the USB Type-A ports to perform their functions. The host device must be able to support DisplayPort Alt Mode (video, charging, and USB 3.2) over the USB Type-C connector.</p> <p><b>WARNING!</b> This monitor's USB Type-C port supports PD3.1 and can provide a maximum output of 140 W. HP recommends that you use products that are protected by the USB Type-C PD3.1 specification (be sure that they can input 28 V/5 A and have a fire enclosure).</p>
(7)	USB Type-C port (upstream)	<p>Connects a USB Type-C cable to a source device such as a computer. This USB Type-C port can function as a USB 3.2 connection.</p> <p><b>NOTE:</b> This port is data only and does not support video input.</p> <p>The USB Type-C port offers a faster transfer rate. The power delivery output is 5 V/3 A to achieve a 15 W output.</p> <p>Connecting a USB Type-C cable from a source device to this port on the monitor enables USB Type-A ports on the monitor.</p>
(8)	Power connector	Connects to a power cord.
(9)	USB Type-A port	<p>Connects a USB cable to a peripheral device, such as a mouse.</p> <p>Connects to any USB Type-A port for KVM functions. These ports support the KVM hot-key function on a keyboard that is connected to them.</p> <p>USB Type-A port with battery fast-charging 1.2 (5 V × 1.5 A = 7.5 W): Provides high-speed data transfer, and charges small devices such as a smartphone, even when the monitor is DC off with OSD Performance mode on.</p> <p><b>NOTE:</b> This port is preferred for mouse use and is also dedicated port for the Text-to-Speech (TTS) adapter.</p> <p><b>NOTE:</b> Use a standard USB Type-A charging cable or cable adapter when charging a small external device (purchased separately).</p>
(10)	USB Type-A port (2)	<p>Connects a USB cable to a peripheral device, such as a keyboard, mouse, or USB devices.</p> <p>Connects to any USB Type-A port for KVM functions. These ports support the KVM hot-key function on a keyboard that is connected to them.</p> <p>USB Type-A port with battery fast-charging 1.2 (5 V × 1.5 A = 7.5 W): Connect a USB device, provides high-speed data transfer, and charges small devices such as a smartphone, even when the monitor is DC off with OSD Performance mode on.</p> <p><b>NOTE:</b> Use a standard USB Type-A charging cable or cable adapter when charging a small external device (purchased separately).</p>
(11)	USB Type-C port (downstream)	<p>Connects a USB Type-C cable to a peripheral USB device and provides data transfer, even when the monitor is in Sleep mode or DC off with OSD Performance mode on. This port charges most devices (up to 15 W) such as a smart phone or a tablet.</p> <p><b>NOTE:</b> Cables or adapters might be required (sold separately).</p>

**Table 2-2 Rear components and their descriptions (continued)**

Component	Component Description	Description
(12)	Audio-out (headphone) jack	Connects optional powered stereo speakers, headphones, earbuds, or a television audio cable  <b>CAUTION:</b> To reduce the risk of personal injury, adjust the volume before using headphones or earbuds.
(13)	Headphone hook	Stores the headphones onto the top-left corner of the monitor.

## Locating the serial number and product number

The serial number and product number are located on a label on the rear of the monitor. You might need these numbers when you contact HP for support.



## Setting up the monitor

This section describes attaching a monitor stand or wall mount and the options for connecting your monitor to a PC, notebook, gaming console, or similar device.

- ⚠ WARNING!** To reduce the risk of serious injury, read the *Safety & Comfort Guide*. It describes proper workstation setup and proper posture, health, and work habits for computer users. The *Safety & Comfort Guide* also provides important electrical and mechanical safety information. The *Safety & Comfort Guide* is available on the web at <http://www.hp.com/ergo>.
- 📄 IMPORTANT:** To prevent damage to the monitor, do not touch the surface of the OLED panel. Pressure on the panel can cause nonuniformity of color or disorientation of the liquid crystals. If this occurs, the screen will not recover to its normal condition.
- 📄 IMPORTANT:** To prevent the screen from getting scratched, defaced, or broken and to prevent damage to the control buttons, position the monitor facedown on a flat surface covered with protective sheet foam or a nonabrasive cloth.

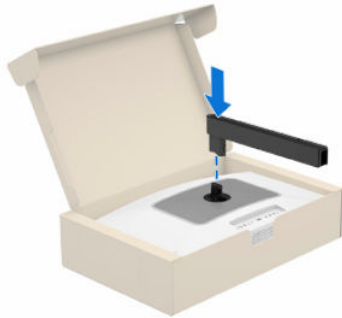
## Attaching the monitor stand

Correctly attaching your monitor stand is critical for safe use. This section describes how to safely attach a stand.

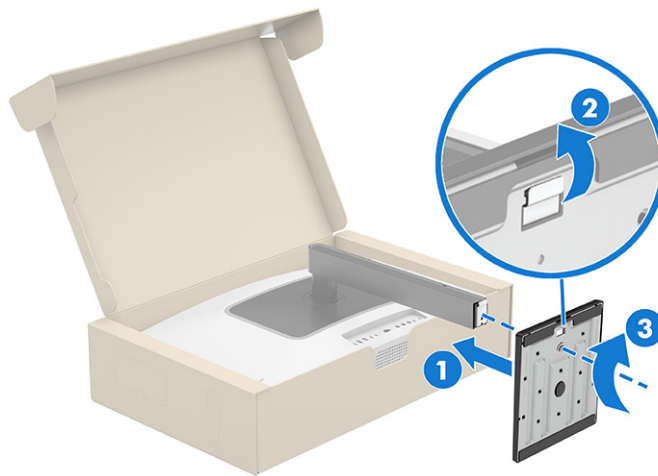
- 💡 TIP:** Consider the placement of the monitor, because surrounding light and bright surfaces might cause interfering reflections.
- 📄 NOTE:** The procedures for attaching a monitor stand might be different on other models.
- 📄 NOTE:** Leave the monitor in the box to protect the screen.

1. Open the box so that the monitor head is facedown in the box.

2. Remove the protective covering from the monitor.
3. Position the monitor stand on the mounting plate on the rear of the monitor, and then snap the monitor stand into place.





4. Attach the base to the monitor stand (1), secure the latch (2), and then tighten the screw (3).



## Mounting the monitor head


To attach your monitor to a wall using a swing arm or other mounting fixture, follow the steps in this section to safely and securely connect your monitor.


 **IMPORTANT:** This monitor supports the VESA industry-standard 100 mm mounting holes. To attach a third-party mounting solution to the monitor head, use four 4 mm, 0.7 pitch, and 10 mm long screws (M4 x 10L). Longer screws might damage the monitor. Be sure that the manufacturer's mounting solution is compliant with the VESA standard and is rated to support the weight of the monitor head. For best performance, use the power and video cables provided with the monitor.

 **NOTE:** Use a UL-listed, CSA-listed, or GS-listed wall-mount bracket when you attach the monitor to a mounting fixture.

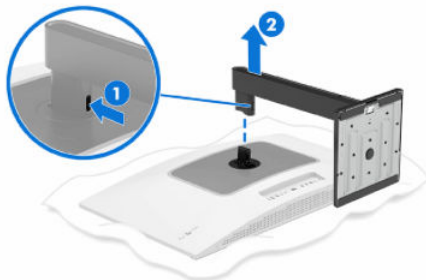
## Removing the monitor stand

If you decide to use a wall mount instead of the monitor stand that you attached, first remove the stand.

 **IMPORTANT:** Before you disassemble the monitor, be sure that the monitor is turned off and all cables are disconnected.

 **IMPORTANT:** To position and stabilize the monitor, HP recommends that two people perform these procedures.

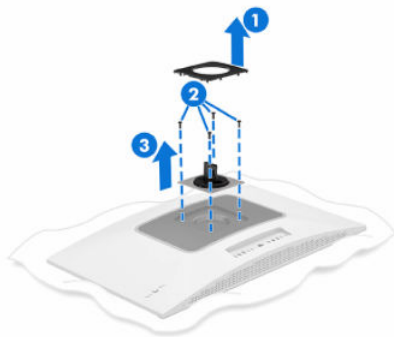
1. Disconnect and remove all cables from the monitor.
2. Position the monitor facedown on a flat surface covered by a protective sheet made of foam or a clean, dry cloth.
3. Push up the latch (1) near the bottom center of the stand where it attaches to the monitor.
4. Remove the stand (2).



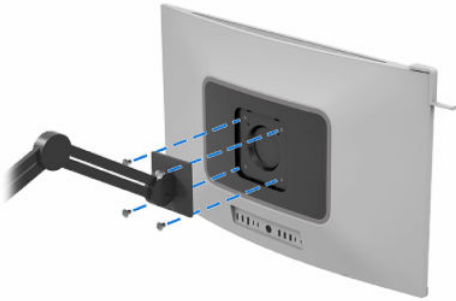
## Attaching the monitor head to a mounting device

You might need additional tools such as a screwdriver (purchased separately) when you attach a mounting device. To avoid damage to your monitor, follow these instructions.

1. Remove the monitor stand.
2. Press down on the cover, and then gently lift it up to remove the plate (1) surrounding the stand connector. Remove the four screws (2) from the VESA holes located on the rear of the monitor head, and then remove the monitor stand connector (3).

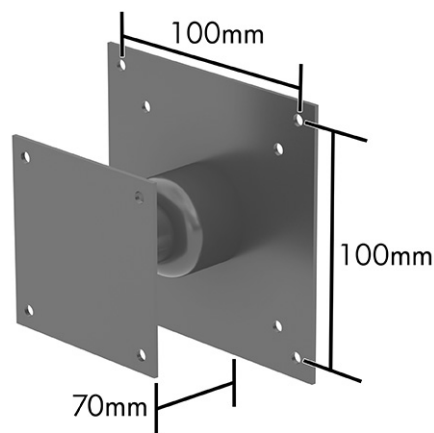


3. To attach the monitor head to a swing arm or other mounting device, and then insert four mounting screws through the holes on the mounting device into the VESA screw holes on the back of the monitor head.



**IMPORTANT:** If these instructions do not apply to your device, follow the mounting device manufacturer's instructions when mounting the monitor to a wall or swing arm.

**NOTE:** If you are attaching the monitor to a wall or other flat surface, HP recommends that you purchase a wall mount kit with the dimensions shown here.



## Connecting the cables

In addition to details about how to connect a cable, this section contains information about how your monitor functions when you connect certain cables.

**NOTE:** This monitor is capable of supporting USB Type-C, HDMI, or DisplayPort inputs. The video mode is determined by the video cable used.

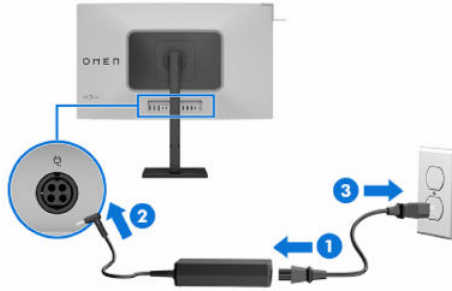
1. Place the monitor in a convenient, well-ventilated location near the computer.
2. Connect the power connector to the AC adapter (1), connect the end of the power cord to the power connector (2) on the monitor, and then plug the power cord into a grounded AC outlet (3).

**WARNING!** To reduce the risk of electric shock or damage to the equipment:

- Do not disable the power cord grounding plug. The grounding plug is an important safety feature.

- Plug the power cord into a grounded (earthed) AC outlet that is easily accessible at all times.
- Disconnect power from the equipment by unplugging the power cord from the AC outlet.

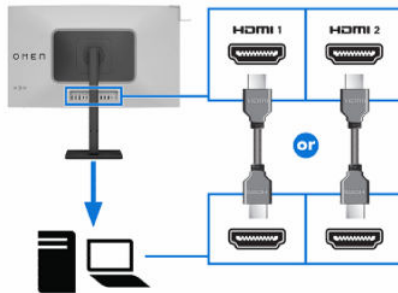
For your safety, do not place anything on power cords or cables. Arrange them so that no one can accidentally step on or trip over them. Do not pull on a cord or cable. When unplugging the power cord from the AC outlet, grasp the cord by the plug.



### 3. Connect a video cable.

**NOTE:** The monitor automatically determines which inputs have valid video signals. To select any input, open the OSD menu and select **Input**.

- Connect one end of an HDMI cable to the HDMI port on the rear of the monitor and the other end to the HDMI port on the source device.

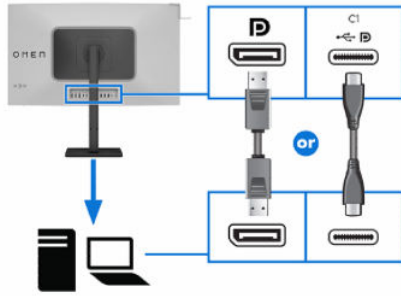


- Connect one end of a DisplayPort cable to the DisplayPort connector on the rear of the monitor and the other end to the DisplayPort connector on the source device.

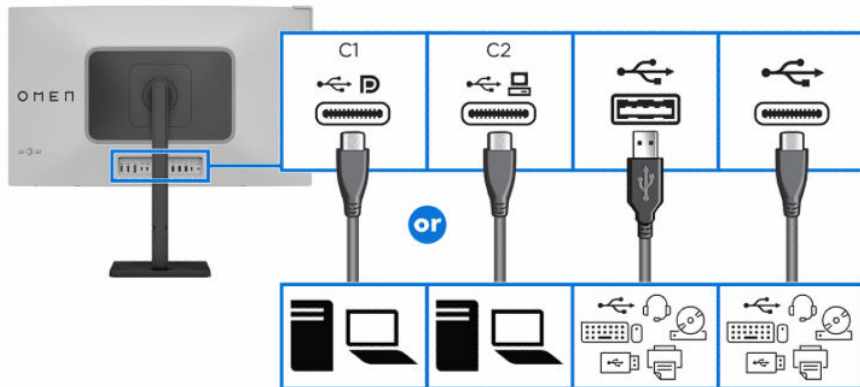
Then, connect one end of a USB Type-C cable to the USB Type-C upstream port on the rear of the monitor and the other end to the USB Type-C port on the source device. Use only the HP-approved USB Type-C cable provided with the monitor.

**NOTE:** The monitor's USB Type-C port provides data, video, and power delivery (up to 140 W).

The host device must be able to support DisplayPort Alt Mode (video, charging, and USB 3.2) over the USB Type-C connector.



4. Use the USB or USB Type-C ports (downstream) on the rear of the monitor to connect devices such as the ones shown in the illustration.



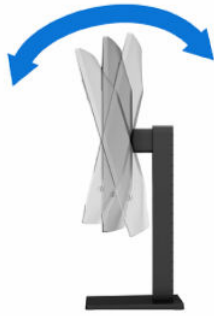
**NOTE:** To enable the USB ports and USB Type-C port (downstream), connect the USB Type-C cable or the USB Type-C-to-USB Type-A cable from the source device to the USB Type-C (upstream) port at the rear of the monitor. This connection serves as a USB hub for a mouse, keyboards, phones, external hard drives, and anything else that is connected via a USB port.

## Adjusting the monitor

To support an ergonomic work space, your monitor offers the adjustment options outlined in this section.

**WARNING!** To reduce the risk of serious injury, read the *Safety & Comfort Guide*. It describes proper workstation setup and proper posture, health, and work habits for computer users. The *Safety & Comfort Guide* also provides important electrical and mechanical safety information. The *Safety & Comfort Guide* is available on the web at <http://www.hp.com/ergo>.

1. Tilt the monitor head forward or backward to set it to a comfortable eye level.



2. Adjust the monitor's height to a comfortable position for your individual workstation. The monitor's top bezel edge should not exceed a height that is parallel to your eye height. A monitor that is positioned low and reclined might be more comfortable for users with corrective lenses. Reposition your monitor as you adjust your working posture throughout the work day.



3. Swivel the monitor to the left or right for the best viewing angle.



4. You can pivot the monitor head from landscape to portrait orientation to adapt to your application.

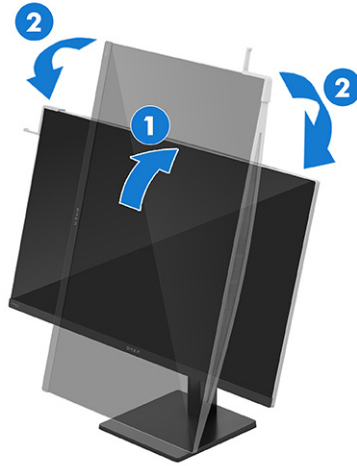
**⚠ CAUTION:** HP recommends that you disconnect all cables before pivoting the monitor from landscape to portrait. If you pivot the monitor with the cables connected, you might damage the cables or the connectors.

**📌 IMPORTANT:** If the monitor is not in full height and full tilt position when pivoting, the bottom-right corner of the monitor panel will come in contact with the base and potentially cause damage to the monitor.


If you are adding an optional speaker bar to the monitor, install it after pivoting the monitor. The speaker bar will come in contact with the base when the monitor pivots and potentially cause damage to the monitor or speaker bar.

---

- Adjust the monitor to full height position and tilt the monitor back to full tilt position **(1)**.
- Pivot the monitor clockwise or counterclockwise 90° from landscape to portrait orientation **(2)**.



---


 **NOTE:** Use the operating system's display settings to rotate the image on the screen from landscape to portrait. To rotate the OSD from landscape to portrait, open the OSD menu, select **Image Adjustment**, select **On-Screen Menu Rotation**, and then select **Portrait**.

---

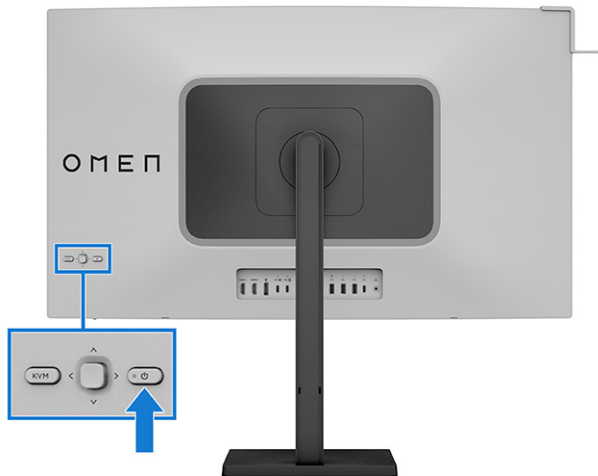
## Turning on the monitor

This section provides important information about preventing damage to your monitor, startup indicators, and troubleshooting information.


---

 **IMPORTANT:** Burn-in image damage might occur on monitors that display the same static image on the screen for 16 or more hours. To avoid burn-in image damage, always activate a screen saver application or turn off the monitor when it is not in use for a prolonged period of time. Image retention is a condition that might occur on all OLED screens.

---



- Press the **power** button on the monitor to turn it on.

 **NOTE:** If pressing the power button has no effect, the Power Button Lockout feature might be enabled. To disable this feature, press and hold the monitor power button for 10 seconds.

When you first turn on your monitor, a monitor status message is displayed for 5 seconds. The message shows which input is the current active signal, the current status of the Preset, the current status of Power Mode, the current status of Display Mode (Off, Normal, AdaptiveSync, or AMD FreeSync Premium Pro), the status of the HDR setting (On or Off), the current preset display resolution, and the recommended preset display resolution.

Another message then prompts you to choose whether to keep the monitor in power-saving mode or switch to performance mode. You can choose which setting you prefer.

The monitor automatically scans the signal inputs for an active input and uses that input for the display.

## HP watermark and image retention policy

This panel technology is not suitable for static, stationary, or fixed images for long periods of time, unless you use screen savers.


Applications with static images can include camera surveillance, video games, marketing logos, and templates. Static images can cause image retention damage that could look like stains or watermarks on the monitor's screen.

Image retention damage on monitors that are in use 24 hours per day is not covered under the HP warranty. To avoid image retention damage, always turn off the monitor when it is not in use, or use the power management setting, if supported on your computer, to turn off the monitor when the computer is idle.

## Connecting an HP notebook or desktop

You can attach a computer, notebook, gaming console, or similar device to the monitor with a single USB Type-C connection. The USB Type-C port provides data, video, and power delivery when you connect the device.


---

 **NOTE:** The host computer must be able to support DisplayPort Alt Mode (video, charging, and USB) over the USB Type-C connector and must also be compatible with USB Type-C ports.

---

To connect a computer, connect one end of a USB Type-C cable to the USB Type-C port on the rear of the monitor and the other end to the USB Type-C port on the computer. This USB Type-C cable provides single-cable connectivity for high-speed data, audio and video, and power delivery.

---

 **NOTE:** The monitor delivers up to 140 W of power over a USB Type-C connection. When connecting the host computer via USB Type-C, DC power out does not need to be connected. Do not connect two power sources (DC power out and USB Type-C) to the host computer.

---

## Installing the headphone hook

You can attach headphones to the monitor by placing them onto the magnetic headphone hook.

- Install the headphone hook by placing it on the top-left corner of the monitor.



---

## 3 Using the monitor

This chapter describes how to use your monitor and its features, including software and utilities, the OSD menu, the function buttons, and power modes.

### Downloading HP Display Center to access HP User Color Recalibration

For professionals who demand exact, consistent, and top-quality color for their monitor, HP User Color Recalibration allows users to recalibrate their displays to maintain professional-grade color accuracy throughout the life of the monitor.

You must download and install the HP Display Center software from the Microsoft Store to access HP User Color Recalibration.

1. Select the Microsoft Store app on your desktop or type `Microsoft Store` in the taskbar search box.
2. Type `HP Display Center` in the **Microsoft Store** search box.
3. Select **Get**, and then follow the on-screen instructions.

The tool downloads to the selected location.

### Downloading software and utilities

You can download and install these files from HP Support.

- INF (Information) file
- ICM (Image Color Matching file <model name>.icm)

To download the files:

1. Go to <http://www.hp.com/support>.
2. Select **Software and Drivers**.
3. Select your product type.
4. Enter your HP monitor model in the search field and follow the on-screen instructions. The .inf and .icm files are included in the SoftPaq.

### Downloading OMEN Gaming Hub and accessing OMEN Light Studio

To access to the setup guide and have full control of both OMEN Gear Switch and OMEN Light Studio, you must install OMEN Gaming Hub.

To download the application:

1. Select the Microsoft Store app on your desktop or type `Microsoft Store` in the taskbar search box.
2. Type `OMEN Gaming Hub` in the Microsoft Store search box.
3. Select **Get**.

## The Information (INF) file

The INF file defines monitor resources used by Windows® operating systems to ensure monitor compatibility with the computer's graphics adapter.

This monitor is Plug and Play compatible, and the monitor will work correctly without installing the INF file. Monitor Plug and Play compatibility requires that the computer's graphics card is VESA® DDC2 compliant and that the monitor connects directly to the graphics card. Plug and Play does not work through separate BNC-type connectors or through distribution buffers, boxes, or both.

## The Image Color Matching (ICM) file

The ICM files are data files that are used in conjunction with graphics programs to provide consistent color matching from monitor screen to printer, or from scanner to monitor screen. These files are activated from within graphics programs that support this feature.



---

**NOTE:** The ICM color profile is written in accordance with the International Color Consortium (ICC) Profile Format specification.

---

## Enabling G-SYNC compatibility

The NVIDIA® G-SYNC® technology eliminates screen tearing and minimizes display stutter and input lag. To use this technology, your monitor has AdaptiveSync certification on the USB-C and DisplayPort video inputs.



---

**NOTE:** G-SYNC is not available for HDMI inputs. To enable G-SYNC compatibility with your monitor, you must have a NVIDIA graphics card, install the NVIDIA Control Panel, and install the G-SYNC driver.

---

1. Download the G-SYNC driver from <https://www.geforce.com/drivers>, and then install it.
2. After the G-SYNC driver is installed, open the **NVIDIA Control Panel**, navigate to **Set up G-SYNC**, and then select your monitor.
3. Be sure that the **Enable G-SYNC check box**, the **G-SYNC Compatible** check box, and the **Enable settings for the selected display model** check box are selected.



---

**NOTE:** The second check box is not displayed if the monitor is G-SYNC certified.

---

4. Select **Apply**. Your monitor restarts, and Adaptive-Sync is enabled for your NVIDIA GPU.

## Using the OSD menu

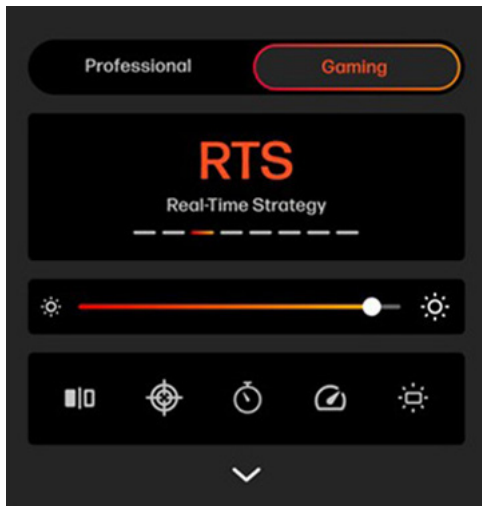
You can adjust your HP monitor to suit your preferences. Use the OSD menu to customize the viewing features of your monitor.

To access and make adjustments in the OSD, use the OSD controller on the monitor's rear panel. See [Rear components on page 5](#).






1. If the monitor is not on, press the power button to turn on the monitor.
2. Press the center of the OSD controller.
3. Move the controller up, down, left, or right to navigate menu choices. Press the center of the controller to make a selection.

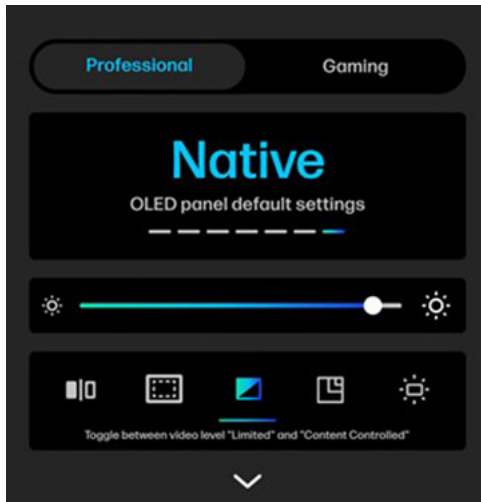
## Quick Settings menus

The following images and tables list the possible menu options in the Quick Settings menu for each mode. The tables include descriptions of how each mode affects the settings of your monitor.








**Table 3-1** Gaming Quick Settings menu

Icon	Description
	Toggles between full screen or split screen mode
	Toggles viewing of the crosshair on or off
	Toggles viewing of the on-screen timer on or off
	Toggles viewing of the refresh rate on or off
	Toggles LED lighting on or off



**Table 3-2 Professional Quick Settings menu**

Icon	Description
	Toggles between full screen or split screen mode
	Shows the <i>Markers</i> menu
	Toggles between the <i>Limited</i> and <i>Content Controlled</i> video level options
	Toggles between <i>True 2k pixel mapping</i> and <i>Fill to source aspect ratio</i> options
	Toggles the LED lighting on or off

## Main menus

The following tables list possible menu options in the OSD main menu for each mode. They include descriptions for each setting and their effect on the appearance or performance of the monitor.

**Table 3-3 OSD menu options and descriptions for Gaming main menu**

Gaming main menu	Description
Gaming	Select and adjust gaming preferences, such as AMD® FreeSync™ or AdaptiveSync, refresh rate, Crosshair, on-screen timer, edge precision, shadow vision, or Multi-Monitor Align.
Picture	Adjust the screen image, including color preset, brightness, sharpness, video level, and image scaling.
Lighting	Turn Display (LED) lighting mode On or Off, select a lighting mode, or set the LED Brightness.
Input	Select a viewing mode, current input signal (DisplayPort, HDMI, USB Type-C), Auto-Switch Input, OMEN Gear Switch, DisplayPort Hot-Plug Detection, DisplayPort Mode, USB-C Configuration, HDMI CEC, Rename Inputs, and Help.
Audio	Enable or disable audio, select an audio mode, adjust the volume, or perform an internal speaker self-test.
Power	Select a power mode, auto-sleep mode setting, power-on recall setting, or power LED setting.

**Table 3-3** OSD menu options and descriptions for Gaming main menu (continued)

Gaming main menu	Description
System	<ul style="list-style-type: none"><li>Select and adjust the Language, Information, OSD menu transparency, Menu Timeout, and OSD Message.</li><li>Adjust the Display Data Channel/Command Interface (DDC/CI), Monitor DSC Support, Diagnostic Patterns, OLED Protection settings, and allows you to return all OSD menu settings to the factory default settings.</li><li>Displays information about current mode, optimal mode, color setting, display mode, firmware package version, hardware revision, and serial number.</li></ul>

**Table 3-4** OSD menu options and descriptions for Professional main menu

Professional main menu	Description
Picture	Adjust the screen image, including color preset, brightness, sharpness, video level, and image scaling.
Input	Select a viewing mode, current input signal (DisplayPort, HDMI, USB Type-C) Auto-Switch Input, OMEN Gear Switch, DisplayPort Hot-Plug Detection, DisplayPort Mode, USB-C Configuration, HDMI CEC, Rename Inputs, and Help.
Audio	Enable or disable audio, select an audio mode, adjust the volume, or perform an internal speaker self-test.
Power	Select a power mode, auto-sleep mode setting, power-on recall setting, or power LED setting.
System	<ul style="list-style-type: none"><li>Select and adjust the Language, Information, OSD menu transparency, Menu Timeout, and OSD Message.</li><li>Adjust the Display Data Channel/Command Interface (DDC/CI), Accessibility, Monitor DSC Support, Diagnostic Patterns, OLED Protection settings, and allows you to return all OSD menu settings to the factory default settings.</li><li>Displays information about current mode, optimal mode, color setting, display mode, firmware package version, hardware revision, and serial number.</li></ul>

## OMEN Gear Switch

Use OMEN Gear Switch to independently control your accessories or peripherals across devices. This feature also allows you to move files and data from one host computer to the other without a USB device.

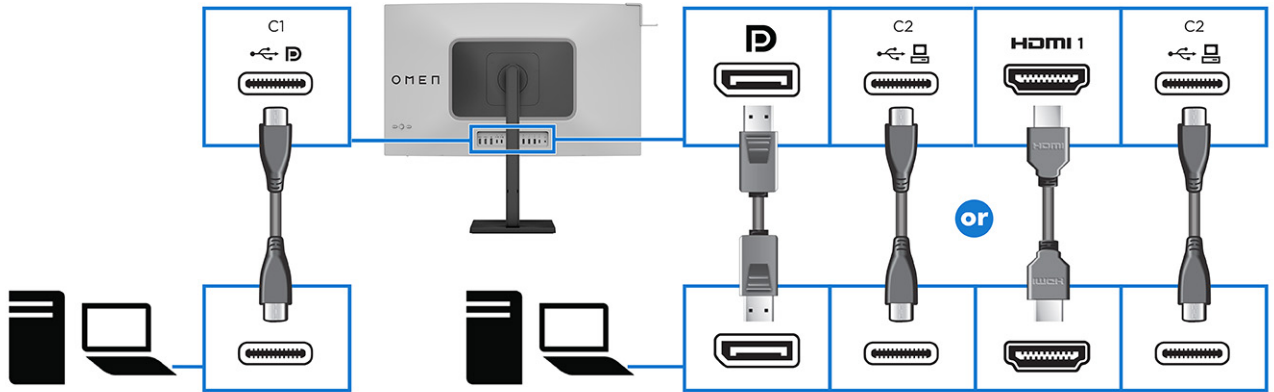
### Connect the cables

For best results, HP recommends connecting both host computers to the monitor using the USB Type-C connections.

If there is no USB Type-C connection available, you can use HDMI or DisplayPort connections for the video input, and connect an additional USB Type-C-to-USB Type-A data cable to enable full functionality.



**NOTE:** When connecting using HDMI or DisplayPort connections, the USB hub is enabled only if the monitor is also connected to the computer using a USB Type-C cable, or USB Type-C-to-USB Type-A cable.



## Using OMEN Gear Switch

OMEN Gear Switch lets you independently control your accessories and peripheral devices across devices. This feature also allows you to move files and data from one host computer to the other without a USB drive.

There are two ways to use OMEN Gear Switch:

- Through the OSD Quick Settings menu, select **Gaming Quick Setting menu > Gaming Advanced menu > Input > OMEN Gear Switch**.
- Through OMEN Gaming Hub for full control of OMEN Gear Switch and its advanced functions.

Follow this procedure to open OMEN Gaming Hub and use OMEN Gear Switch:

1. Type **OMEN Gaming Hub** in the Windows search bar.
2. Select the **OMEN Gaming Hub** app to access OMEN Gear Switch.
  - If OMEN Gaming Hub is not installed, download the OMEN Gaming Hub app manually from the Microsoft Store.

## Changing the Power Mode setting

This section describes how to activate Performance mode. Certain features on your monitor might require Performance mode to be active.

When in sleep mode, to comply with international power standards, the monitor default setting is Power Saver mode.

If your monitor supports Performance mode and you need to keep the USB ports enabled when the monitor is in Auto-Sleep Mode, change the Power Mode setting from **Power Saver** to **Performance**.

To change the power mode setting:

1. Press the center of the OSD controller on the rear of the monitor to open the OSD menu.
2. Select **Power**, select **Power Mode**, and then select **Performance**.
3. Select **Back**, and then close the OSD.

## Using Auto-Sleep Mode

Your monitor has an energy-saving feature called Auto-Sleep Mode, which is a reduced power state. This section describes how to activate or adjust Auto-Sleep Mode on your monitor.

When Auto-Sleep Mode is enabled, which it is by default, the monitor enters a reduced power state when the computer signals low-power mode, which it does by the absence of either a horizontal or vertical sync signal.

Upon entering this reduced power state (Auto-Sleep mode), the monitor screen is blanked, the backlight turns off, and the power light turns amber. The monitor draws less than 0.5 W of power when in this reduced power state. The monitor wakes from Auto-Sleep mode when the computer sends an active signal to the monitor (for example, when you activate the mouse or keyboard).

To disable Auto-Sleep Mode in the OSD:

1. Press the **Menu** button to open the OSD, or press the center of the OSD controller to open the OSD.
2. In the OSD, select **Power**.
3. Select **Auto-Sleep Mode**, and then select **Off**.

## Using PiP and PbP

The monitor supports both Picture in Picture (PiP), where one source is overlaid on another, and Picture beside Picture (PbP), where one source is positioned adjacent to another, either horizontally (for landscape orientation) or vertically (for portrait orientation).

To use PiP or PbP:

1. Connect a secondary input source to the monitor.
2. Press the center of the OSD controller on the rear of the monitor to open the OSD.
3. In the OSD, select **Input**, and then select either of the PiP or PbP icons.  
  
The monitor scans the secondary inputs for a valid signal input and uses that input for the PiP or PbP picture.
4. To change the PiP or PbP input, select the input source to use in the OSD,
5. To change the size of the PiP, select **PIP Size** in the OSD, and then select the size to use.
6. To adjust the position of the PiP, select **PIP Position** in the OSD, and then select the position to use.

## Using external lighting

The monitor features an external light to illuminate a desktop or wall and enhance the gaming experience. You can adjust the color and brightness of the external light or turn it off in the OSD menu or OMEN Gaming Hub.

To adjust the LED lighting:

1. Press the center of the OSD controller on the rear of the monitor to open the OSD menu.
2. In the Gaming OSD Quick Settings menu, select **Lighting**.

3. Select a setting:

- **Color Cycle:** Slowly fades in and out from one color to another.
- **Breathing:** Slowly fades in and out on one single color with adjustable speeds: Slow, Medium, and Fast.
- **Static Color:** Sets LED light colors to white, red, green, blue, yellow, purple, light blue, orange, or custom.



**NOTE:** You can adjust the RGB color levels by using the slider tools.

---

- **Random Color:** Randomly cycles LED light color through the static colors.



**NOTE:** External lighting is set to On (OMEN White) by default.

---

---

## 4 Support and troubleshooting

If your monitor is not working as expected, you might be able to resolve the issue by following the instructions in this section.

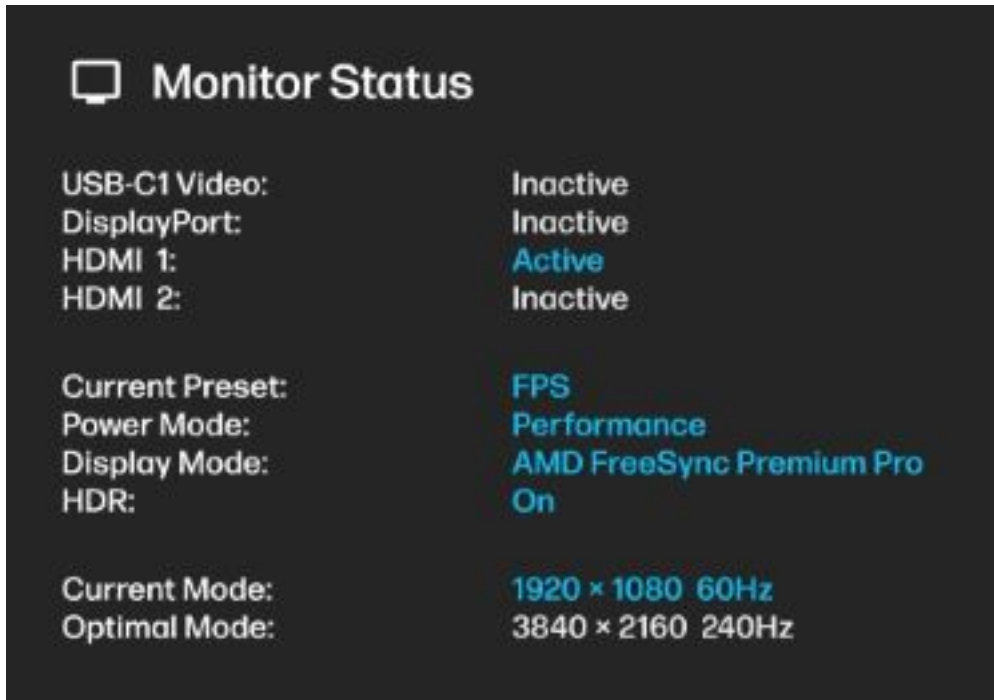
### Using the self-test function

To help verify the correct operation of this monitor, a series of startup images and messages is displayed. These images and messages function as a self-test. Use the following procedure to start the self-test.

1. Turn off the monitor and disconnect all the cables except the power cord.
2. Turn on the monitor. An image similar to the following is displayed.



A monitor status message is displayed next.




The power-on image and monitor status message indicates that the monitor is working as expected and is looking for a valid video signal.

3. Connect a video source to the monitor and repeat steps 1 and 2. If no external video signal is detected, check the video connection to the host computer.

## Solving common issues

The following table lists possible issues, the possible cause of each issue, and the recommended solutions.

---

 **NOTE:** Always ensure that the BIOS, device firmware, and monitor firmware are updated to the latest version.

---

**Table 4-1 Common issues and solutions**

Issues	Possible cause	Solution
Screen is blank or video is blinking.	<ul style="list-style-type: none"> <li>Power cord is disconnected.</li> <li>Monitor is off.</li> <li>Video cable is improperly connected.</li> <li>System is in Auto-Sleep Mode.</li> <li>Video card is incompatible.</li> </ul>	<ul style="list-style-type: none"> <li>Connect the power cord.</li> <li>Press the monitor <b>power</b> button.</li> <li><b>NOTE:</b> If pressing the power button has no effect, press and hold the power button for 10 seconds to disable the Power Button Lockout feature.</li> <li>Connect the video cable properly. For more information, see <a href="#">Connecting the cables on page 10</a>.</li> <li>Press any key on the keyboard or move the mouse to inactivate the screen blanking utility.</li> <li>Perform one of the following actions: <ul style="list-style-type: none"> <li>Open the OSD menu and select the <b>Input</b> menu. Set <b>Auto-Switch Input</b> to <b>Off</b>, and then manually select the input.</li> <li>Replace the video card or connect the video cable to one of the computer's on-board video sources.</li> </ul> </li> </ul>
Image appears blurred, indistinct, or too dark.	Brightness setting is too low.	Open the OSD menu, and select <b>Brightness</b> to adjust the brightness scale as needed.
"Check Video Cable" is displayed on the screen.	Monitor video cable is disconnected.	Connect the appropriate video signal cable between the computer and monitor. Be sure that the computer power is turned off while connecting the video cable.
"Input Signal Out of Range" is displayed on screen.	Video resolution rate, refresh rate, or both, are set higher than the monitor supports.	Change the settings to a supported setting. See <a href="#">Preset display resolutions on page 32</a> .
The monitor does not enter into a low-power sleep state.	The monitor's power saving control is disabled.	Open the OSD menu and select <b>Power</b> , select <b>Auto-Sleep Mode</b> , and then set auto-sleep to <b>On</b> .
"OSD Lockout" is displayed.	The monitor's OSD Lockout function is enabled.	Press and hold the <b>Left</b> button for 10 seconds to disable the OSD Lockout function.
"Power Button Lockout" is displayed.	The monitor's Power Button Lockout feature is enabled.	Press and hold the <b>Power</b> button for 10 seconds to unlock the power button function.
Monitor has trouble waking from Sleep mode		<p>DisplayPort inputs: Set the DisplayPort hot-plug detection to <b>Always Active</b>.</p> <p>Power mode monitors: Set the hot-plug detection to <b>Always Active</b> to switch the monitor to Performance mode.</p>
Slow performance from USB		The monitor has a two-lane default for USB Type-C. On selected products, you can press the Joypad button to open the OSD menu, navigate to the USB Type-C configuration, and then select <b>USB-C Video + USB 3.0</b> for data transfer prioritization.
Lower refresh rate or color bits		Select <b>USB-C Video + USB 2.0</b> for refresh rate/color bits prioritization.

## Button lockouts

The button lockout function is available only when the monitor is on, an active signal is displayed, and the OSD menu is closed. Holding down the power button or [Left](#) button for 10 seconds disables that button. You can enable the button again by holding it down for 10 seconds.

---

## 5 Maintaining the monitor

Properly maintained, your monitor can run for many years. These instructions provide steps you can perform to keep your monitor in the best condition.

### Maintenance guidelines

Follow these instructions to enhance the performance and extend the life of the monitor.

- Do not open the monitor cabinet or attempt to service this product yourself. Adjust only those controls that are covered in the operating instructions. If the monitor is not operating properly or has been dropped or damaged, contact an authorized HP dealer, reseller, or service provider.
- Use only a power source and connection appropriate for this monitor, as indicated on the label or back plate of the monitor.
- Be sure that the total ampere rating of the products connected to the outlet does not exceed the current rating of the AC outlet and that the total ampere rating of the products connected to the cord does not exceed the rating of the cord. Look on the power label to determine the ampere rating (AMPS or A) for each device.
- Install the monitor near an outlet that you can easily reach. Disconnect the monitor by grasping the plug firmly and pulling it from the outlet. Never disconnect the monitor by pulling the cord.
- Turn the monitor off when it is not in use, and use a screen saver program. Doing this can substantially increase the life expectancy of the monitor.
- Never block the slots and openings of the cabinet or push objects into them. These openings provide ventilation.
- Do not drop the monitor or place it on an unstable surface.
- Do not allow anything to rest on the power cord. Do not walk on the cord.
- Keep the monitor in a well-ventilated area, away from excessive light, heat, or moisture.


### Cleaning the monitor


Use these instructions to clean your monitor when necessary.

1. Turn off the monitor and unplug the power cord from the AC outlet.
2. Disconnect any external devices.
3. Dust the monitor by wiping the screen and the cabinet with a soft, clean antistatic cloth.

---

**⚠ CAUTION:** Never spray cleaner directly onto the screen. It can run behind the bezel and damage the electronics. Water dripping into the ventilation openings or other points of entry can cause damage to the monitor. Protect your monitor by always consulting your user guide for cleaning procedures, or go to <http://www.hp.com/support> and search for How to Clean Your Computer.

 **IMPORTANT:** Do not use cleaners that contain petroleum-based materials such as benzene, thinner, or any volatile substance to clean the monitor screen or cabinet. These chemicals might damage the monitor.

 **IMPORTANT:** Spray the cleaner onto a cloth and use the damp cloth to gently wipe the screen surface. The cloth should be moist, but not wet. Allow the monitor to air-dry before use.

---

4. After you remove the dirt and debris, you can also clean the surfaces with a disinfectant. The World Health Organization (WHO) recommends cleaning surfaces, followed by disinfection, as a best practice for preventing the spread of viral respiratory illnesses and harmful bacteria. A disinfectant that is within HP's cleaning guidelines is an alcohol solution consisting of 70% isopropyl alcohol and 30% water. This solution is also known as rubbing alcohol and is sold in most stores.


## Shipping the monitor

Keep the original packing box in a storage area. You might need it later if you ship the monitor or move.

# A Technical specifications

This section contains technical specifications for the physical aspects of your monitor, such as the weight and viewing dimensions, as well as required environmental operating conditions and power source ranges.

All specifications represent the typical specifications provided by HP component manufacturers; actual performance can vary either higher or lower.

 **NOTE:** For the latest specifications or additional specifications for this product, go to <http://www.hp.com/go/quickspecs/> and search for your specific monitor model to find the model-specific QuickSpecs.

## 80 cm (31.5 in) model specifications

This section provides specifications for your monitor.

**Table A-1** Technical specifications

Specification	Metric	U.S.
Display, wide-screen	80 cm	31.50 in
Type	OLED	
Viewable image size	80 cm diagonal	31.50 in diagonal
Maximum weight (unpacked)	8.80 kg	19.40 lb
Dimensions (include base)	71.91 × 61.71 × 24.32 cm	28.31 × 24.30 × 9.57 in
Height (highest position)	76.50 cm	30.12 in
Height (lowest position)	51.30 cm	20.20 in
Depth	24.32 cm	9.57 in
Width	71.91 cm	28.31 in
Tilt	5~20°	
Swivel	±360°	
<b>Environmental requirements temperature</b>		
Operating temperature	5°C to 35°C	41°F to 95°F
Storage temperature	-20°C to 60°C	-4°F to 140°F
Storage humidity	5% to 80%	
Power source	ADP-500CB BA	
Input terminal	Two HDMI ports, one DisplayPort connector, and one USB Type-C DisplayPort connector	

# Preset display resolutions

The following display resolutions are the most commonly used modes and are set as factory defaults. The monitor automatically recognizes these preset modes, and they will appear properly sized and centered on the screen.

## 80 cm (31.5 in) model

This section provides preset display resolutions and preset timing resolutions.

**Table A-2** Preset display resolutions

Preset	Pixel format	Horz freq (kHz)	Vert freq (Hz)
1	640 × 480	31.469	59.940
2	640 × 480	37.500	75.000
3	720 × 400	31.469	70.087
4	800 × 600	37.879	60.317
5	1024 × 768	48.363	60.004
6	1024 × 768	60.023	75.029
7	1280 × 800	49.702	59.810
8	1280 × 1024	79.976	75.025
9	1280 × 1024	69.981	60.020
10	1440 × 900	55.935	59.887
11	1600 × 900	60.000	60.000
12	1680 × 1050	65.290	59.954
13	1600 × 1200	75.000	60.000
14	1920 × 1080	67.500	60.000
15	1920 × 1080	192.788	165.000
16	1920 × 1080	291.587	240.000
17	1920 × 1200	74.556	59.885
18	2560 × 1440	88.787	60.000
19	2560 × 1440	257.169	165.000
20	2560 × 1440	222.151	144.000
21	2560 × 1440	388.511	240.000
22	3840 × 2160	133.313	60.000
23	3840 × 2160	385.769	165.000
24	3840 × 2160	582.959	240.000

**Table A-3** Preset timing resolutions

Preset	Timing name	Pixel format	Horz freq (kHz)	Vert freq (Hz)
1	2160p120	3840 × 2160	270.000	120.000
2	2160p100	3840 × 2160	225.000	100.000
3	2160p60	3840 × 2160	135.000	60.000
4	2160p50	3840 × 2160	112.500	50.000
5	2160p48	3840 × 2160	108.000	48.000
6	2160p30	3840 × 2160	67.500	30.000
7	2160p30	3840 × 2160	56.25	25.000
8	2160p24	3840 × 2160	54.000	24.000
9	1080p120	1920 × 1080	135.000	120.000
10	1080p100	1920 × 1080	112.500	100.000
11	1080p60	1920 × 1080	67.500	60.000
12	1080p50	1920 × 1080	56.25	50.000
13	720p120	1280 × 720	90.000	120.000
14	720p100	1280 × 720	75.000	100.000
15	720p60	1280 × 720	45.000	60.000
16	720p50	1280 × 720	37.5000	50.000
17	576p	720 × 576	31.250	50.000
18	480p	720 × 480	31.469	59.940

## Power supply specification

This section provides power supply specifications.

**Table A-4** Power supply specification

Manufacturer	Model number	Power supply rating
Delta Electronics, Inc.	ADP-500CB B	Input 100-240V~ 7.0A 50-60HZ Output 24.0V 20A

## Energy saver feature

This monitor supports a reduced power state.

The reduced power state is initiated if the monitor detects the absence of either the horizontal sync signal or the vertical sync signal. Upon detecting the absence of these signals, the monitor screen is blank, the backlight is turned off, and the power light turns amber. In the reduced power state, the monitor uses < 0.5 W of power. There is a brief warm-up period before the monitor returns to its normal operating state.

See [Using Auto-Sleep Mode on page 23](#) for instructions about setting the energy saver mode.

---

# B Accessibility

HP's goal is to design, produce, and market products, services, and information that everyone everywhere can use, either on a standalone basis or with appropriate third-party assistive technology (AT) devices or applications.

## HP and accessibility

Because HP works to weave diversity, inclusion, and work/life into the fabric of the company, it is reflected in everything HP does. HP strives to create an inclusive environment focused on connecting people to the power of technology throughout the world.

## Finding the technology tools you need

Technology can unleash your human potential. Assistive technology removes barriers and helps you create independence at home, at work, and in the community. Assistive technology helps increase, maintain, and improve the functional capabilities of electronic and information technology.

For more information, see [Finding the best assistive technology on page 35](#).

## The HP commitment

HP is committed to providing products and services that are accessible for people with disabilities. This commitment supports the company's diversity objectives and helps ensure that the benefits of technology are available to all.

The HP accessibility goal is to design, produce, and market products and services that can be effectively used by everyone, including people with disabilities, either on a standalone basis or with appropriate assistive devices.

To achieve that goal, this Accessibility Policy establishes seven key objectives to guide HP actions. All HP managers and employees are expected to support these objectives and their implementation in accordance with their roles and responsibilities:

- Raise the level of awareness of accessibility issues within HP, and provide employees with the training they need to design, produce, market, and deliver accessible products and services.
- Develop accessibility guidelines for products and services, and hold product development groups accountable for implementing these guidelines where competitively, technically, and economically feasible.
- Involve people with disabilities in the development of accessibility guidelines and in the design and testing of products and services.
- Document accessibility features, and make information about HP products and services publicly available in an accessible form.
- Establish relationships with leading assistive technology and solution providers.
- Support internal and external research and development that improves assistive technology relevant to HP products and services.

- Support and contribute to industry standards and guidelines for accessibility.

## International Association of Accessibility Professionals (IAAP)

IAAP is a not-for-profit association focused on advancing the accessibility profession through networking, education, and certification. The objective is to help accessibility professionals develop and advance their careers and to better enable organizations to integrate accessibility into their products and infrastructure.

As a founding member, HP joined to participate with other organizations to advance the field of accessibility. This commitment supports HP's accessibility goal of designing, producing, and marketing products and services that people with disabilities can effectively use.

IAAP will make the profession strong by globally connecting individuals, students, and organizations to learn from one another. If you are interested in learning more, go to <http://www.accessibilityassociation.org> to join the online community, sign up for newsletters, and learn about membership options.

## Finding the best assistive technology

Everyone, including people with disabilities or age-related limitations, should be able to communicate, express themselves, and connect with the world using technology. HP is committed to increasing accessibility awareness within HP and with our customers and partners.

Whether it's large fonts that are easy on the eyes, voice recognition that lets you give your hands a rest, or any other assistive technology to help with your specific situation—a variety of assistive technologies make HP products easier to use. How do you choose?

## Assessing your needs

Technology can unleash your potential. Assistive technology removes barriers and helps you create independence at home, at work, and in the community. Assistive technology (AT) helps increase, maintain, and improve the functional capabilities of electronic and information technology.

You can choose from many AT products. Your AT assessment should allow you to evaluate several products, answer your questions, and facilitate your selection of the best solution for your situation. You will find that professionals qualified to do AT assessments come from many fields, including those licensed or certified in physical therapy, occupational therapy, speech/language pathology, and other areas of expertise. Others, while not certified or licensed, can also provide evaluation information. You will want to ask about the individual's experience, expertise, and fees to determine if they are appropriate for your needs.

## Accessibility for HP products

These links provide information about accessibility features and assistive technology, if applicable and available in your country or region, that are included in various HP products. These resources will help you select the specific assistive technology features and products most appropriate for your situation.

- HP Aging & Accessibility: Go to <http://www.hp.com>, type `Accessibility` in the search box. Select **Office of Aging and Accessibility**.
- HP computers: For Windows products, go to <http://www.hp.com/support>, type `Windows Accessibility Options` in the **Search our knowledge library** search box. Select the appropriate operating system in the results.
- HP Shopping, peripherals for HP products: Go to <http://store.hp.com>, select **Shop**, and then select **Monitors or Accessories**.

If you need additional support with the accessibility features on your HP product, see [Contacting support on page 39](#).

Additional links to external partners and suppliers that may provide additional assistance:

- [Microsoft Accessibility information \(Windows and Microsoft Office\)](#)
- [Google Products accessibility information \(Android, Chrome, Google Apps\)](#)

## Monitor accessibility features (select products/regions only)

HP monitors enable you to find and configure display settings directly from your monitor, without needing to use an external device such as a computer, using multiple types of accessibility enhancements.

### Built-in accessibility features

The following accessibility features are built into the monitor.

- Physical buttons or a Joypad that are tactilely discoverable.
- Physical button or Joypad labels that are displayed on-screen.
- On-Screen Display (OSD) menu
  - Menu items, text, and elements meet a 4.5:1 (or greater) contrast ratio.
  - Focus indication is provided.

### Text to Speech (select products/regions only)

Text to Speech converts text into spoken words. You can enable text to assist you when reading text on the monitor.

If your monitor has built-in speakers, you can request the TTS accessibility device by calling HP Support at (877) 656-7058, Monday through Friday, 6 a.m. to 9 p.m. Mountain Time.



---

**NOTE:** Support is in English only.

---

### What is Accessibility Mode?

Accessibility Mode enables you to use audio navigation and to enlarge items on the screen.

When you turn on Accessibility Mode, the following adjustments are made:

- Menu timeout setting is set to the maximum duration of 60 seconds (default is 30 seconds).
- Language is set to English, which is the only language currently supported in Accessibility Mode. When Accessibility Mode is turned off, the previous language is used.
- On FHD monitors, the OSD menu is set to a fixed position in the lower-right quadrant of the screen.
- Menu items, text, and other elements meet a 4.5:1 contrast ratio or greater.
- Text is enlarged to a 4.8 mm or larger font size.

## Standards and legislation

Countries worldwide are enacting regulations to improve access to products and services for persons with disabilities. These regulations are historically applicable to telecommunications products and services, PCs and printers with certain communications and video playback features, their associated user documentation, and their customer support.

### Standards

The US Access Board created Section 508 of the Federal Acquisition Regulation (FAR) standards to address access to information and communication technology (ICT) for people with physical, sensory, or cognitive disabilities.

The standards contain technical criteria specific to various types of technologies, as well as performance-based requirements which focus on functional capabilities of covered products. Specific criteria cover software applications and operating systems, web-based information and applications, computers, telecommunications products, video and multimedia, and self-contained closed products.

### Mandate 376 - EN 301 549

The European Union created the EN 301 549 standard within Mandate 376 as an online toolkit for public procurement of ICT products. The standard specifies the accessibility requirements applicable to ICT products and services, with a description of the test procedures and evaluation methodology for each requirement.

### Web Content Accessibility Guidelines (WCAG)

Web Content Accessibility Guidelines (WCAG) from the W3C's Web Accessibility Initiative (WAI) helps web designers and developers create sites that better meet the needs of people with disabilities or age-related limitations.

WCAG advances accessibility across the full range of web content (text, images, audio, and video) and web applications. WCAG can be precisely tested, is easy to understand and use, and allows web developers flexibility for innovation. WCAG 2.0 has also been approved as [ISO/IEC 40500:2012](#).

WCAG specifically addresses barriers to accessing the web experienced by people with visual, auditory, physical, cognitive, and neurological disabilities, and by older web users with accessibility needs. WCAG 2.0 provides characteristics of accessible content:

- **Perceivable** (for instance, by addressing text alternatives for images, captions for audio, adaptability of presentation, and color contrast)
- **Operable** (by addressing keyboard access, color contrast, timing of input, seizure avoidance, and navigability)
- **Understandable** (by addressing readability, predictability, and input assistance)
- **Robust** (for instance, by addressing compatibility with assistive technologies)

### Legislation and regulations

Accessibility of IT and information has become an area of increasing legislative importance.

The [HP policy landscape](#) website provides information about key legislation, regulations, and standards in the following locations:

- United States
- Canada
- Europe
- Australia

## Useful accessibility resources and links

These organizations, institutions, and resources might be good sources of information about disabilities and age-related limitations.



---

**NOTE:** This is not an exhaustive list. These organizations are provided for informational purposes only. HP assumes no responsibility for information or contacts you encounter on the internet. Listing on this page does not imply endorsement by HP.

---

## Organizations

These organizations are a few of the many that provide information about disabilities and age-related limitations.

- American Association of People with Disabilities (AAPD)
- The Association of Assistive Technology Act Programs (ATAP)
- Hearing Loss Association of America (HLAA)
- Information Technology Technical Assistance and Training Center (ITTATC)
- Lighthouse International
- National Association of the Deaf
- National Federation of the Blind
- Rehabilitation Engineering & Assistive Technology Society of North America (RESNA)
- Telecommunications for the Deaf and Hard of Hearing, Inc. (TDI)
- W3C Web Accessibility Initiative (WAI)

## Educational institutions

Many educational institutions, including these examples, provide information about disabilities and age-related limitations.

- California State University, Northridge, Center on Disabilities (CSUN)
- University of Wisconsin - Madison, Trace Center
- University of Minnesota computer accommodations program

## Other disability resources

Many resources, including these examples, provide information about disabilities and age-related limitations.

- ADA (Americans with Disabilities Act) Technical Assistance Program
- ILO Global Business and Disability network
- EnableMart
- European Disability Forum
- Job Accommodation Network
- Microsoft Enable

## HP links

These HP-specific links provide information that relates to disabilities and age-related limitations.

[HP comfort and safety guide](#)

[HP public sector sales](#)

## Contacting support

HP offers technical support and assistance with accessibility options for customers with disabilities.



---

**NOTE:** Support is in English only.

---

- Customers who are deaf or hard of hearing who have questions about technical support or accessibility of HP products:
  - Use TRS/VRS/WebCapTel to call (877) 656-7058 Monday through Friday, 6 a.m. to 9 p.m. Mountain Time.
- Customers with other disabilities or age-related limitations who have questions about technical support or accessibility of HP products:
  - Call (888) 259-5707 Monday through Friday, 6 a.m. to 9 p.m. Mountain Time.

---

# Index

## A

- accessibility 34, 35, 37, 39
- accessibility needs
  - assessment 35
- assistive technology (AT)
  - finding 35
  - purpose 34
- AT (assistive technology)
  - finding 35
  - purpose 34

## C

- calling technical support 3
- components
  - rear 5
- connectors
  - DisplayPort 5
  - mini DisplayPort 5
  - power 5
- customer support,
  - accessibility 39

## D

- diagnostics 25
- DisplayPort connector 5

## G

- getting started 2
- getting to know your monitor 3

## H

- HDMI port 5
- Headphone hook 16
- HP Assistive Policy 34
- HP Display Center 17
- HP resources 3
- HP support 3

## I

- International Association of Accessibility Professionals 35

## L

- label 7

## M

- Main menus 20

## O

- OMEN Gear Switch 21, 22

## P

- ports
  - HDMI 5
  - USB Type-C 5
- power connector 5
- product label 7
- product number 7

## Q

- Quick settings 19

## R

- rear components 5
- resources, accessibility 38

## S

- safety information 2
- Section 508 accessibility standards 37
- self-test 25
- serial number 7
- standards and legislation, accessibility 37
- support 3

## T

- technical support 3
- Text to Speech 36
- troubleshooting 25

## U

- USB Type-C port 5
- User Color Recalibration 17

## W

- warnings 2